

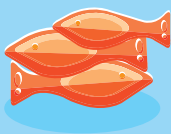


European Commission



Belgium: Multiannual national plan for the development of sustainable aquaculture an overview

Current situation



Total volume (2013):
173 tonnes

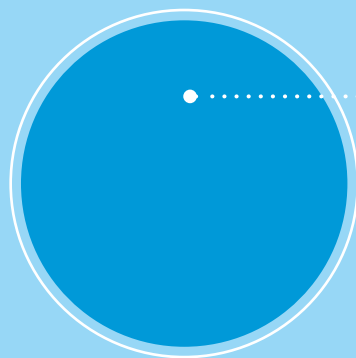


Total value (2013):
0.7 million euro



Belgium's share of EU aquaculture production:
0.01% volume
0.02% value

Main species by volume



Trout
173 100 t
100%

● Freshwater finfish

Source of data: Eurostat



National Growth Objectives (2014-2022)



Production volume from 332 tonnes to **1 032 tonnes** in 2022 (210% increase).

Production value from 4.5 million euro to **11.5 million euro** in 2022 (156% increase).



Response to the strategic guidelines



Simplify administrative procedures:

- System for electronic submission of the required information will be established.
- Exchange of electronic documents between the responsible institutions, to facilitate information requests to producers.
- The working group on legislation of the Flemish Aquaculture Platform will identify legal bottlenecks and signal them at the responsible institutions.



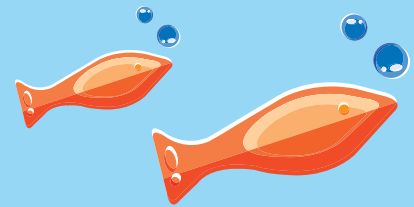
Level playing field:

- Improving the coherence of the legislation at various governmental /administrative levels to provide an unambiguous interpretation of the rules, and adapt to the needs of the aquaculture sector.
- Flanders: The website www.aquacultuurvlaanderen.be provides information on experiences, initiatives, successes and failures.



Enhance competitiveness:

- Preparation of marketing studies and strategies.
- Promotional activities for aquaculture products.
- Integration of aquaculture in agri-food chains.



Best practices



The Plan identifies a number of examples of best practices covering different species, production systems and scales, including:

- Establishing a kind of consulting instrument on fish culture, containing references to best practices for producers and retailers, including legal obligations and useful addresses.
- Wallonia will set up a two stage training programme for fish farmers – prior to setting up a fish farm for new farmers and on-going exchange for already active producers.

